

AerobTec LED Time Display Manual

Manufacturer:
AerobTec, s.r.o.
 Pionierska 15
 831 02 Bratislava

www.aerobtec.com
info@aerobtec.com

Contents

1. Specifications.....	1
2. Introduction.....	2
3. Hardware.....	2
Mounting.....	2
Connection.....	2
4. SOFTWARE.....	2
Driver.....	2
PC Application Led Time Display.....	3
F3J Timing System.....	3
5. Warning.....	4
6. Correct disposal of this product.....	4
7. Product Registration.....	4
8. Revision History.....	4

1. Specifications

- ▲ Dimensions: 167.5 x 58.5 cm
- ▲ Visible are: 154 x 52 cm
- ▲ Weight: 19 kg
- ▲ Power supply: 12V
- ▲ Visibility: 250m
- ▲ IP 33
- ▲ Cooperates with F3J Timing System
- ▲ Visible on sunlight
- ▲ USB connection with PC

2. Introduction

AerobTec LED Time Display is a device for displaying operation time during R/C sailplane competitions. It is supplied from a DC adapter, and connected to USB via a long USB extension cable. It uses F3J Timing system by Denis Truffo.

It is possible to use also LED Time Display computer program by AerobTec which can change the display brightness and display a user number or current time (supplied from the PC).

3. Hardware

Mounting

Please mount the supplied roof on the screws located on the top of the display frame.

The display can be mounted to a stand using the supplied four M8 screws located on the back side. The stand is not supplied with the display.

Connectionp

LED Time display is connected to computer via USB A connector (as used for printers) and supplied from 12V/5A power source. It is not recommended to supply it directly from a car battery.

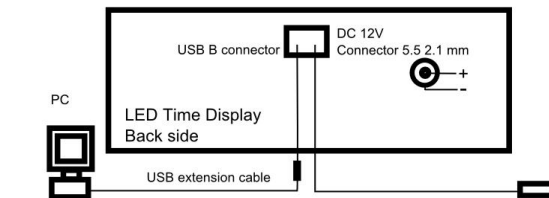


Illustration 1: Connection of LED Time Display

4. SOFTWARE

Driver

The displays is represented in your computer as a virtual serial port and requires a USB driver. An installation program for USB driver for Windows (XP or higher) is available at www.ftdichip.com/Drivers/CDM/CDM%20v2.12.00%20WHQL%20Certified.exe.

After the installation Windows provides the port a COM number which must be chosen in the application itself.

PC Application Led Time Display

Please download AerobTec Led Time Display PC application at <http://www.aerobtec.com/download/LED%20Time%20Display.exe>

It allows you to change the brightness of the display and display system clock from your computer.

In order to use the program correctly you should choose the correct COM port assigned to the display during the driver installation.

Once selected, you can change the brightness, display a custom number or current time.

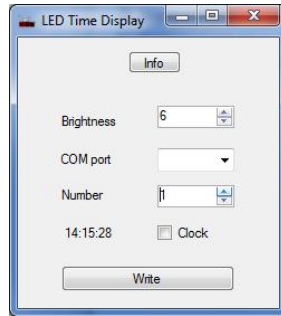


Illustration 2: PC application

F3J Timing System

In order to use the display with F3J Timing system, the com port settings should be set according to the following figure:

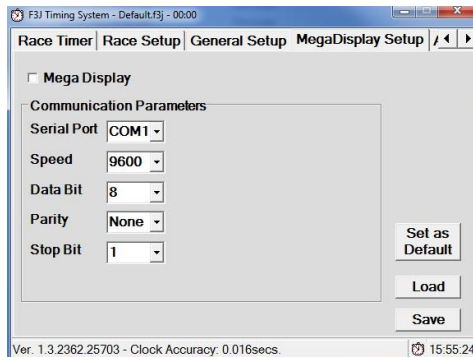



Illustration 3: Port settings in F3J Timing System

Choose the right Serial Port number assigned from the installation.

5. Warning

The display can be exposed to a light rain for a short time. Do not use the display outside permanently. It is not recommended to supply the display from a fully charged 12V car battery.

6. Correct disposal of this product

 This product should not be disposed with other household wastes at the end of its working life. To prevent possible harm to the environment or human health from uncontrolled waste disposal, please separate this from other types of wastes and recycle it responsibly to promote the sustainable reuse of material resources. Household Users should contact either the retailer where they purchased this product, or their local government office, for details of where and how they can take this item for environmentally safe recycling.

Business users should contact their supplier and check the terms and conditions of the purchase contract. This product should not be mixed with other commercial wastes for disposal.

7. Product Registration

If you did not purchase the product directly from AerobTec please mail following information to sales@erobtec.com. By registering your products you will be informed about updates and notifications.

Name :

Address* :

Country :

Phone* :

Email :

Product :

Serial number of product :

Date Purchased :

Where did you purchased your product? :

* this information is not obligatory

An alternative option is to register at <http://www.aerobtec.com/support/products-registration>

8. Revision History

Rev. 1.0. (September 2014)

- Initial release